

Next level kitchening



CUISINNO

THE **KITCHEN APPLIANCE** AMONGST MONITORS

PROFESSIONALS USE **KITCHEN MONITORS**

It is no surprise that the use of dedicated kitchen-display systems in high-end gastronomy is on the rise - the benefits are evident:

✓ **Improved communication flow**

Kitchens are busy places – and it can get loud from time to time. Hence it is not always easy to keep a clear head in every situation.

A kitchen display greatly facilitates the communication between guest, waiter and the kitchen team. Data is exchanged with the POS system in real time, without delays or misunderstandings due to noise. Consequently, workflows become much more efficient.

✓ **Increased efficiency due to smoothened workflows**

No lost receipts, a reduction in ‘idling’ – Cuisinno greatly increases the effectivity of the whole team.

Thanks to the visual depiction of an order, the entire team is immediately able to understand their respective tasks and can begin with the preparation before the waiter has even returned to the kitchen.

✓ **A professional appliance for professional kitchens**

A professional kitchen in full operation is very different to a private living room. A dedicated kitchen monitor therefore must meet very specific requirements that conventional (home-) devices do not provide.



THE **BENEFITS OF CUISINNO**



Cuisinno has been designed specifically to facilitate and smoothen the demanding workflows of the entire team in a professional kitchen. That is why Cuisinno is cherished by chefs and staff alike:

✓ **Fail-safe & robust**

The Cuisinno Monitor is designed for 24/7 continuous operation. All parts in the robust, hard-anodized aluminum housing are industrial components, with unmatched quality and reliability compared to consumer products.

✓ **100% hygienic**

Hygiene is of highest priority in kitchens! Cuisinno has no air vents or vent openings through which water, filth or grease could enter.

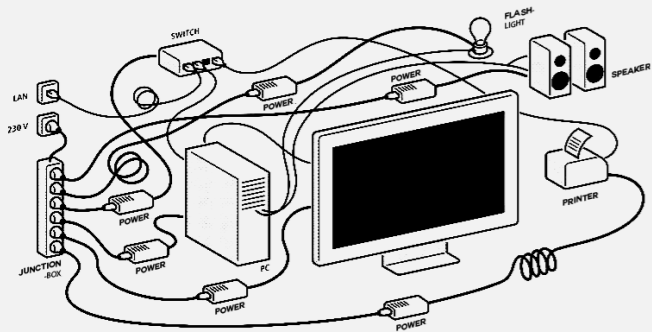
✓ **Cleaning is fast and easy**

Smooth surfaces, no dirt joints and the internal cable routing in the monitor as well as mounting system make Cuisinno as easy to clean thoroughly as any other kitchen surface.

✓ **Temperature resistant**

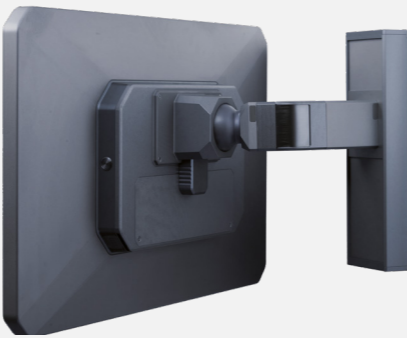
Designed for a temperature range from 0 to +50 °C.

CUISINNO IN COMPARISON



CONVENTIONAL SYSTEMS

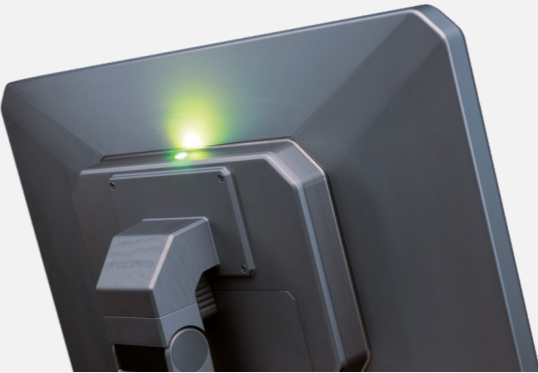
Conventional kitchen-display systems are generally just converted consumer products, the wiring is complex, complicated and prone to errors.



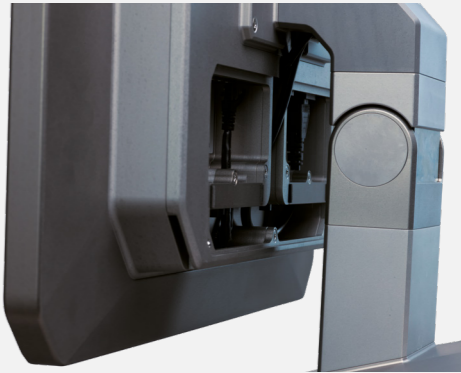
THE CUISINNO SOLUTION

CUISINNO shelters all necessary system components in a closed, hard anodized aluminium housing. Robust, compact and virtually impervious.

SOPHISTICATED DETAILS



Smart notification function:
A flashing LED indicates an incoming new order. No more overlooked tickets!



Smart INTERNAL cable routing:
Neatly stowed cables allow effortless cleaning of the device - and eliminate the risk of tripping!

TECHNICAL DETAILS & ACCESSORIES



Housing

Material: hard anodised aluminium. No vent openings, service-friendly access to all interfaces.

Measurements		Weight	
21.5"	568 x 360 x 70 mm	21.5"	11.65 kg
32"	796 x 490 x 83 mm	32"	19.75 kg



Display & Buttons

TFT full HD active matrix (1920 x 1080 pixels)
Brightness: 21.5" 250 cd/m² 32.0" 400 cd/m²

Capacitive multi-touch technology
Capacitive function buttons
Can be operated with wet hands and light gloves

CPU	Intel® Atom E3845 quad core 1.91 GHz
Memory	2x4 GB DDR3L-SODIMM-1600
Hard Drive	32 GB mSATA
OS	Windows Embedded POSReady Windows 10 IoT

Interfaces

2 x USB 2.0 DP (DisplayPort)	2 x USB 2.0 on the rear Integrated switch: 4 Port Gbit Cold appliance socket 110 - 230 VAC
---------------------------------	--

Power supply
Integrated Power Supply 110 - 230 VAC

Certifications

- ✓ Safety requirement IEC 62368-1: 2014
- ✓ Protection class IP55 according to IEC 60529
- ✓ Interference emission according to EN61000-6-3:2007
- ✓ Interference stability according to EN61000-6-1:2007

Tested by external laboratories.

Special Features

- ✓ Automatic temperature monitoring
- ✓ Flashing LED signalling receipt of new ticket
- ✓ „Touch-lock“ for cleaning device while in use
- ✓ Two stereo speakers with 3-watt output each

MOUNTING SYSTEMS

Table Mount
SF 215 / SF 320



Wall Mount
TAWH 400 215 / TAWH 400 320



Floor- & Ceiling-Mount

DBH 1200 215 DBH 1200 320
height adjustable 120 cm - 150 cm

DBH 1600 215 DBH 1600 320
height adjustable 140 cm - 190 cm

VESA adapter plate
100 x 100 mm